

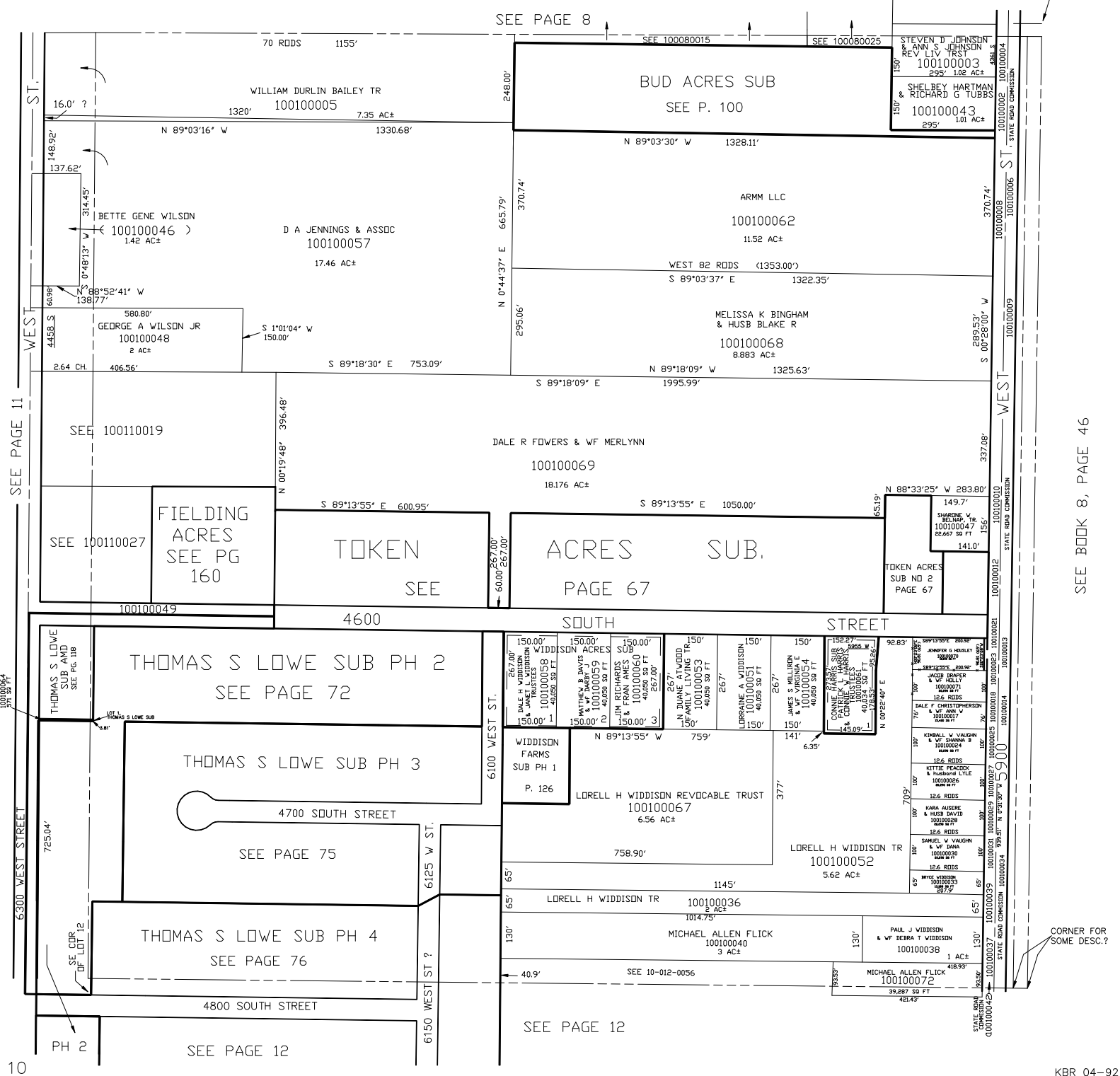
SECTION 12, T.5N., R.3W., S.L.B. & M.

IN HOOPER CITY
SCALE 1" = 200'

TAXING UNIT: 376

SEE PAGE 8

COR. FOR SOME DESC.



SEE PAGE 11

SEE PAGE 12

SEE PAGE 12

SEE BOOK 8, PAGE 46